



Taranaki Commercial Radio Ratings - Survey 4 2022

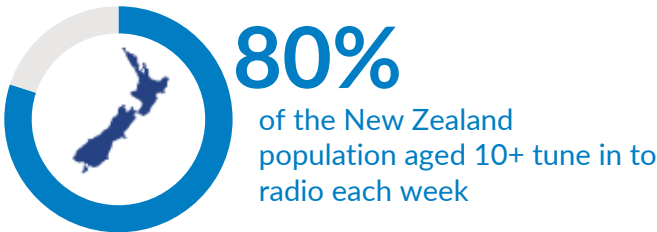
The New Zealand Commercial Radio Industry released the S4 2022 GfK Radio Audience Data into the market today, and it shows over 3.6 million New Zealanders were listening to radio every week and almost 3.4 million of those listen to commercial radio stations.

Michael Boggs, NZME CEO says: "With more than 3.6m Kiwis tuning in, today's survey results further prove the strength of terrestrial radio, reaching highly engaged audiences up and down the country with a wide range of news, sport, music and entertainment content. This is further complemented by a strong digital audio offering, including through digital radio and podcasting. A strong, future-proofed media ecosystem that supports both commercial and public media, and traditional and digital platforms, is vital for our customers and our audiences nationwide."

Mediaworks CEO Cam Wallace says, "As we round out 2022 and head into 2023, it's fantastic to see such strong demand for commercial radio in Aotearoa. This reinforces the results from the recently released Edison Research Infinite Dial NZ study which shows the strength of AM/FM radio across all age demographics and various platforms, as well as reinforcing the need for a thriving commercial radio sector within the wider media ecosystem in New Zealand."

TOTAL RADIO LISTENING

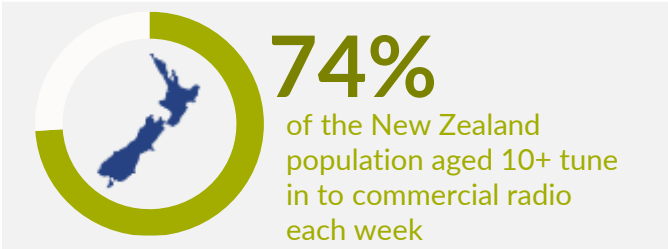
3.64 million people or 80% of New Zealanders aged 10+, listen to radio each week in Survey 4 2022.



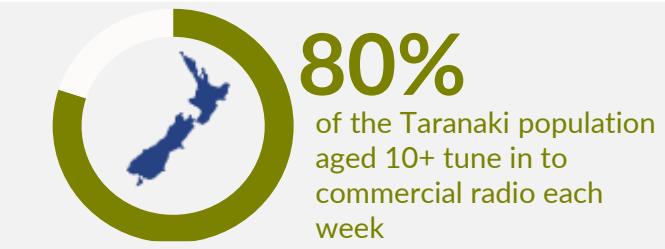
COMMERCIAL RADIO LISTENING

Total NZ

Taranaki^



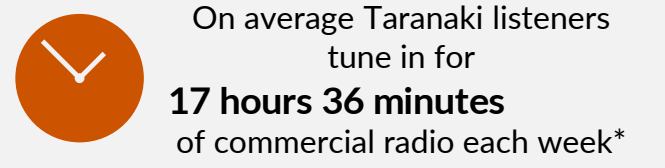
3.39 million people or 74% of New Zealanders aged 10+, listen to commercial radio each week in Survey 4 2022.



87,400 or 80% of people in Taranaki aged 10+, listen to commercial radio each week in Survey 4 2022.



On average Total NZ listeners tune in for 15 hours 18 minutes of commercial radio each week\*



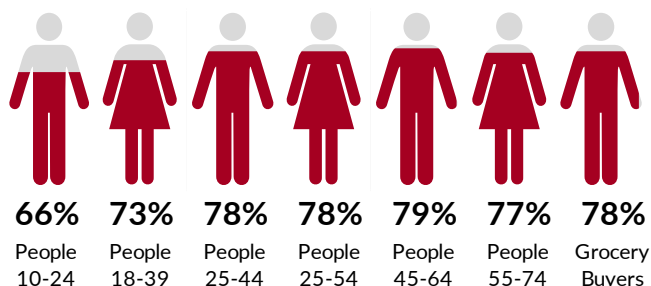
On average Taranaki listeners tune in for 17 hours 36 minutes of commercial radio each week\*

GfK RAM S4/22, Total NZ, Cume %, People 10+, Mon-Sun 12mn-12mn (Unless otherwise stated). ^TARANAKI \*Time Spent Listening. All figures are based on commercial radio unless otherwise stated.

## GfK Taranaki Commercial Radio Ratings | Survey 4 2022

### WEEKLY CUMULATIVE AUDIENCES

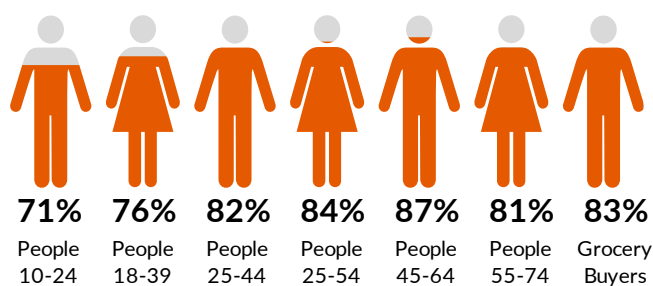
#### Total NZ



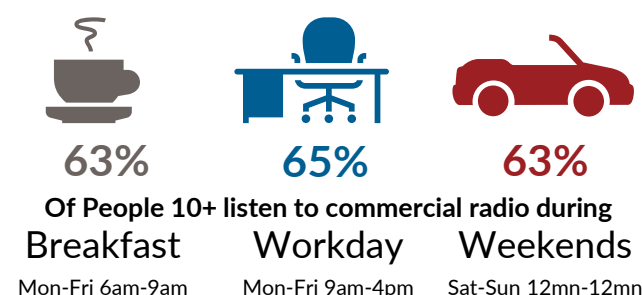
Listen to commercial radio



#### Taranaki^



Listen to commercial radio



The full Commercial Total New Zealand and market by market data reports including demographic and daypart information can be found by [clicking here](#).

For more information, please contact:

Jana Rangooni,  
Chief Executive,  
Radio Broadcasters Association  
Mob: 021 2 446617, [jana@rba.co.nz](mailto:jana@rba.co.nz)

or

Johan Haupt,  
Senior Account Manager, Radio, GfK  
Mob: 027 5677 333,  
[Johan.haupt@gfk.com](mailto:Johan.haupt@gfk.com)

#### GfK. Growth from Knowledge.

For over 85 years, we have earned the trust of our clients around the world by solving critical business questions in their decision-making process around consumers, markets, brands and media. Our reliable data and insights, together with advanced AI capabilities, have revolutionized access to real-time actionable recommendations that drive marketing, sales and organizational effectiveness of our clients and partners. That's how we promise and deliver "Growth from Knowledge".

For more information, please visit [www.gfk.com](http://www.gfk.com) or follow GfK on Twitter: <https://twitter.com/GfK>

Responsible under press legislation:

Rekha Indiran  
Marcom Manager, South East Asia and Pacific  
[Rekha.Indiran@gfk.com](mailto:Rekha.Indiran@gfk.com)